



EP-CAM Polyclonal Antibody

Catalog No	YP-Ab-16290
Isotype	IgG
Reactivity	Human;Rat;Mouse;
Applications	WB;IF;ELISA
Gene Name	EPCAM
Protein Name	Epithelial cell adhesion molecule
Immunogen	The antiserum was produced against synthesized peptide derived from human TACD1. AA range:116-165
Specificity	EP-CAM Polyclonal Antibody detects endogenous levels of EP-CAM protein.
Formulation	Liquid in PBS containing 50% glycerol, 0.5% BSA and 0.02% sodium azide.
Source	Polyclonal, Rabbit,IgG
Purification	The antibody was affinity-purified from rabbit antiserum by affinity-chromatography using epitope-specific immunogen.
Dilution	Western Blot: 1/500 - 1/2000. Immunofluorescence: 1/200 - 1/1000. ELISA: 1/5000. Not yet tested in other applications.
Concentration	1 mg/ml
Purity	≥90%
Storage Stability	-20°C/1 year
Synonyms	EPCAM; GA733-2; M1S2; M4S1; MIC18; TACSTD1; TROP1; Epithelial cell adhesion molecule; Ep-CAM; Adenocarcinoma-associated antigen; Cell surface glycoprotein Trop-1; Epithelial cell surface antigen; Epithelial glycoprotein; EGP; Epithelial gly
Observed Band	34kD
Cell Pathway	Lateral cell membrane ; Single-pass type I membrane protein . Cell junction, tight junction . Colocalizes with CLDN7 at the lateral cell membrane and tight junction. .
Tissue Specificity	Highly and selectively expressed by undifferentiated rather than differentiated embryonic stem cells (ESC). Levels rapidly diminish as soon as ESC's differentiate (at protein levels). Expressed in almost all epithelial cell membranes but not on mesodermal or neural cell membranes. Found on the surface of adenocarcinoma.
Function	
Background	This gene encodes a carcinoma-associated antigen and is a member of a family that includes at least two type I membrane proteins. This antigen is expressed on most normal epithelial cells and gastrointestinal carcinomas and functions as a homotypic calcium-independent cell adhesion molecule. The antigen is being used as a target for immunotherapy treatment of human carcinomas. Mutations in



this gene result in congenital tufting enteropathy. [provided by RefSeq, Dec 2008],

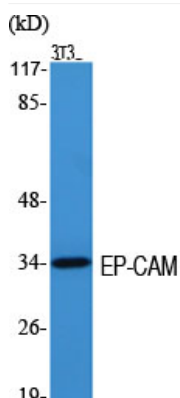
matters needing attention

Avoid repeated freezing and thawing!

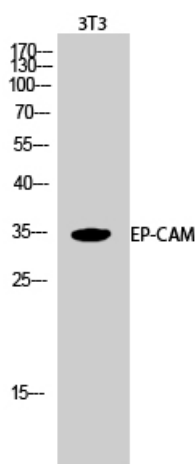
Usage suggestions

This product can be used in immunological reaction related experiments. For more information, please consult technical personnel.

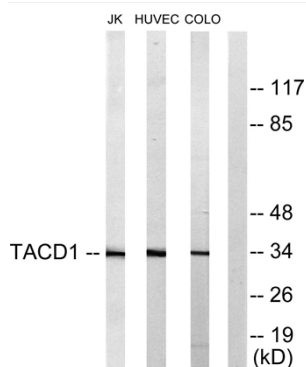
Products Images



Western Blot analysis of various cells using EP-CAM Polyclonal Antibody diluted at 1:2000



Western Blot analysis of 3T3 cells using EP-CAM Polyclonal Antibody diluted at 1:2000



Western blot analysis of lysates from Jurkat, HUVEC, and COLO205 cells, using TACD1 Antibody. The lane on the right is blocked with the synthesized peptide.